

310 MULCHER

BRON
POWER TO PERFORM



The BRON 310 Mulcher is the right-size machine to tackle small, moderate, and some larger scale jobs such as right-of-way clearing projects for pipelines, electric and power lines, recreational trails, clearing for commercial sites, reclaiming farmland, fireguards, and more.

HYDRAULIC TILTING CAB
CONTINUOUS HYDRAULIC FILTRATION
HIGH EFFICIENCY COOLING PACKAGE
D4 UNDERCARRIAGE

3.24 PSI

LOW GROUND PRESSURE

OSCILLATING TRACKS

MANOEUVERABILITY

310 HP

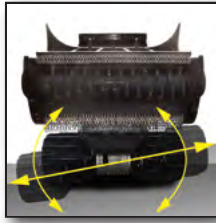
EFFICIENT POWER

FEATURES



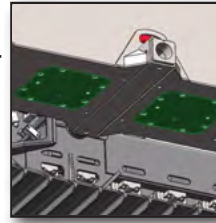
ERGONOMIC DESIGN

Pressurized cab has joystick steering & seating designed for operator comfort with height, headrest & seat tilt adjustments & air-ride suspension to reduce operator fatigue.



OSCILLATING TRACK

Frames pivot freely for maximum surface contact & traction. Wide tracks add stability & flotation in sensitive environments.



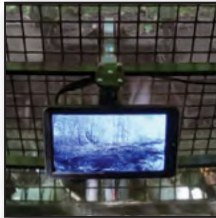
REMOVABLE BELLY PANS

For easy cleanout & service with recessed fasteners for a smooth underside.



OPERATORS CAB

1/2" Lexan™ standard with optional 1-1/4" windshield protects the operator from debris. ROPS/FOPS/OPS certified for added safety. Tilting cab for easy service access.



REAR-VIEW CAMERA

The wide-angle lens reduces the need to look over your shoulder, allowing you to focus on the task at hand!



AUDIO

Digital media receiver (AM/FM/USB) with built-in Bluetooth for streaming any audio from your mobile device.

OPTIONS



POSITIVE AIR SHUT-OFF

The positive air shut-off shuts down the engine by preventing engine air intake.



TRACK GUIDES

Standard or full track guides available.



HYDRAULIC WINCH

Available with 15,000 lb hydraulic winch.



COLD CLIMATE PACKAGE

Diesel powered pre-heating solution for quick and reliable cold weather starting and two additional batteries for additional cranking power.



FRONT WINDOW GUARD

The front window guard protects the front window from large branches.



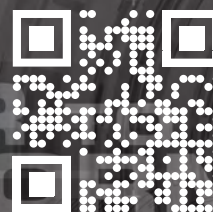
SIDE VIEW MIRRORS

Side view mirrors provide the operators with increased rearward visibility.

MULCHER SPECIFICATIONS

Engine Make & Model	Cummins® QSB 6.7
Emissions Certified	T4f / Stage V
Rating	2500 rpm
Net Power - hp (KW)	300 (224) Peak 310 (231)
Torque - ft-lbs (Nm)	950 (1,288)
Mulcher Circuit Max Flow - gpm (lpm)	115 (435)
Mulcher Circuit Max Pressure - gpm (lpm)	5,400 (372)
Steering	Joystick control
Fuel Tank Capacity - U.S. Gal. (L)	100 (379)
Ground Pressure Without Head - psi (kPa)	3.42 (23.6) SAE-J1309
Ground Clearance - in. (mm)	23" (584)
Undercarriage	D4
Suspension	Oscillating track frames
Travel Speed - mph (kph)	4.5 (7.2)
Operating Weight Without Head - lbs (kg)	26,550 (12,043)
Tractor Width - in. (mm)	94 (2,388)
Overall Height - in. (mm)	125 (3,175)
Overall Length Without Head - in. (mm)	185 (4,699)

BRON
POWER TO PERFORM



Toll Free: 1.800.263.1060
Tel: 1.519.421.0036
Fax: 519.421.0028
Email: info@rwfbron.com

873 Devonshire Avenue,
Woodstock, Ontario,
Canada, N4S 8Z4